

A large, square hot tub with a white interior and a dark grey exterior is the central focus. It is illuminated with blue LED lights around its perimeter and inside the water. The hot tub is situated on a dark wooden deck. In the background, there is a modern outdoor lounge area with a white sofa, a small table, and various plants. To the right, a black outdoor grill is lit with a fire. The overall scene is set at night, with warm ambient lighting from the grill and the hot tub's lights.

Mayfair

SPAS



RELAX



Relaxation for Life.

Inspired by a desire to create luxurious water therapy for a lifetime of enjoyment and wellness, the Mayfair Premium Spa range is the ultimate in refined relaxation.

Enjoy special time with friends and loved ones, relax muscles, relieve pain and tension, soak away stress and greatly improve physical, emotional and mental health with a premium spa from Mayfair.

Our range of spas feature:

- ✓ Superior Aristech acrylic finish available in a range of colours
- ✓ Reinforced shell with a high impact ABS base
- ✓ Extensive insulation designed to reduce heat loss and lower running costs
- ✓ Advanced low-chemical water management system
- ✓ Relaxing hydrotherapy and water feature options
- ✓ Touchscreen and smartphone control
- ✓ LED lighting and speakers for a truly personal experience

A Mayfair Premium Spa will seamlessly complement any outdoor space, turning your home into a sanctuary.



RELAX



The Mayfair Premium Spa Experience

✓ Beautiful design and innovative technology

Mayfair Premium Spas are contemporary, energy efficient and engineered for New Zealand's conditions. With innovation at the forefront of design and development, Mayfair's range of premium spas feature market-leading materials, ergonomic design and wireless system control for the ultimate spa experience.

✓ Hydrotherapy

Our spas are designed to provide you with a world-class hydrotherapy experience. High pressure hydromassage jets relieve aching muscles and stimulate circulation, whilst air bubble jets create bubbles that surround and stimulate the body for a whole-body experience. Our Windsor Model also features a volcano super-massage jet for the ultimate deep tissue massage.

✓ Total control

The Balboa Control System™ with wireless system control is the most reliable and widely used system in the spa pool industry, providing you with the best spa experience all at the touch of a finger.

Control the lights, set the temperature, activate the jets, choose your playlist, and maintain your pool from an app on your smartphone, or from the built-in touchscreen.

Whether you are in the mood for deep relaxation, therapeutic hydrotherapy, or a party with friends, you are in complete control.

✓ Crystal Clear Water

Relax in the knowledge that Mayfair Premium Spas are fitted with advanced water management systems engineered to withstand the demanding environment of the hot tub.

Not only will you swim in the clearest, cleanest water, but your water will be protected from the damaging effects of harmful viruses, bacteria and pathogens without adding harmful chemicals.

Coupled with a reduction in the use of chemical levels, low power consumption and less maintenance, your Mayfair spa water management is gentle on skin, ongoing maintenance costs and the environment.

✓ Quality

Mayfair Premium Spas are built with high quality durable materials designed for New Zealand conditions. Thorough testing is undertaken to ensure every aspect of our spa range meets our strict quality standards. In addition, a unique production tracking number is allocated to every spa pool to easily track information, including the day of production, ex-factory, and all configurations for electrical appliances.

We stand by the quality of our spas and you can trust that your Mayfair Premium Spa is a sound investment in your wellness.

★ WARRANTY All spas include a seven-year warranty on structure, three-year warranty on spa shell and a two-year warranty on electronics and spa components.

Arctic Insulation



All Mayfair Premium Spas feature high quality insulation designed to reduce heat loss and lower running costs.

For the most extreme New Zealand climates, an Arctic Insulation Upgrade is available on some spa pools within our range.

The upgrade includes:

- ✓ Thicker spa cover
- ✓ Thicker insulation on the spa shell (from 20mm to 40mm)
- ✓ Draught-proof cabinet with 25mm environmentally friendly insulation wrap and
- ✓ 3mm of heat-reflecting material
- ✓ 44mm thick base material made up of 38mm high density foam and 3mm of heat
- ✓ reflecting material
- ✓ 45mm thick ABS and foil base





Colour Palette



DESIGN

+ STEP 1

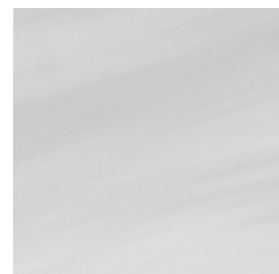
Spa Shell Colours

High performance specialty Aristech AcrySpa™ continuous cast acrylic sheets are used for the interior surface of the Mayfair Premium Spa range.

The cross-linked molecular structure provides better chemical, thermal, UV and mechanical resistance, resulting in longer-lasting colour-fastness and a stronger, more durable surface.



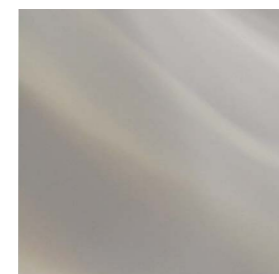
White Pearlescent



Silver Marble



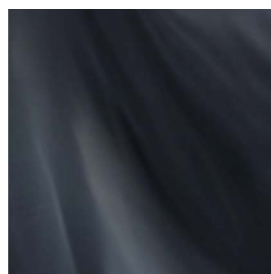
Gypsum



Oyster Opal



Summer Sapphire



Midnight Opal

+ STEP 2

Cabinet Colours

Our high-quality UV-resistant synthetic skirting cabinet has the look of fine furniture without the maintenance of wood. The synthetic ABS base provides a solid foundation and protection from moisture and nature's elements.



Woven Brown



Woven Grey

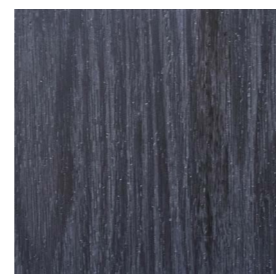


Black

Optional Cabinet Upgrade



Brown



Grey



Black

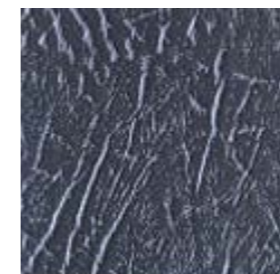
+ STEP 3

Cover Colours

Our premium all-weather covers retain heat, help keep your water clean and clear, and are designed specifically for your Mayfair Premium Spa – ensuring the perfect fit and finish to perfectly complement your shell and skirting.



Brown



Grey



Black

Designer's Picks

With outstanding performance features and a colour-palette to suit all design-aesthetics, you can not only expect exceptional quality, but also create the perfect colour palette to blend seamlessly with your outdoor area.

We've paired up our favourite combinations for your inspiration:





Spa Models

+ HAMPTON



Seating Capacity	4 persons (2 seaters + 2 loungers)
Dimensions	2130 * 1600 * 800mm
Water Capacity	800 liters
Weight	180 kg dry
Acrylic	US Aristech Acrylic
Control System	Balbao Control System
Jets - 35pcs (Stainless steel jets)	6 * 5.0" in directional hydromassage jets 7 * 3.5" in directional hydromassage jets 16 * 2.5" in directional hydromassage jets 6 * 2.0" in directional hydromassage jets
Massage Pump	1 * 3HP 2-SPEED
Filtration Pump	No
Heater	3KW
Max Power Draw Amps	15 amps
LED Level Light	12
Insulation Thickness	Hot tub insulation 18-20mm Skirting insulation 25mm
Ozone	Yes
UV Filter	No
ABS Base	Yes
Support Frame	Stainless Steel

Pillows	2
Fountain	Yes
Bluetooth Music	Yes
Additional Features	Steps and Cover included



**+ CAMBRIDGE**

Seating Capacity	5 persons (3 seaters + 2 loungers)
Dimensions	2000 * 2000 * 830mm
Water Capacity	1000 liters
Weight	280 kg dry
Acrylic	US Aristech Acrylic
Control System	Balbao Control System
Jets - 40pcs (Stainless steel jets)	9 * 3.0" in directional hydromassage jets 31 * 1.0" in directional hydromassage jets
Massage Pump	1 * Dual-speed pump / 2.2KW
Filtration Pump	No
Heater	3KW
Max Power Draw Amps	15 amps
LED Level Light	16
Insulation Thickness	Hot tub insulation 18-20mm Skirting insulation 25mm
Ozone	Yes
UV Filter	No
ABS Base	Yes
Support Frame	Stainless Steel




Pillows	3
LED Waterfall	Yes
LED Fountain	Yes
LED Drink Holder	2
Additional Features	Steps and Cover included

+ KENSINGTON

Seating Capacity	5 persons (3 seaters + 2 loungers)
Dimensions	2100 * 2100 * 830mm
Water Capacity	1200 liters
Weight	300 kg dry
Acrylic	US Aristech Acrylic
Control System	Balbao Control System (with wifi capability)
Jets - 75pcs (Stainless steel jets)	13 * 3.0" in directional jets 62 * 1.0" in directional jets
Massage Pumps	2 * 2HP
Filtration Pump	0.35HP
Heater	3KW
Max Power Draw Amps	15 amps
LED Level Light	12
Insulation Thickness	Hot tub insulation 18-20mm Skirting insulation 25mm
Ozone	Yes
UV Filter	Yes
ABS Base	Yes
Support Frame	Stainless Steel



Pillows	3
LED Fountain	Yes
180° Pop-up Fountain	Yes
LED Drink Holder	2
Bluetooth Music	Yes
Arctic Insulation Upgrade	Yes 
Additional Features	Steps and Cover included





+ OXFORD



Seating Capacity	6 persons (5 seaters + 1 loungers)
Dimensions	1900 * 1900 * 830mm
Water Capacity	1000 liters
Weight	280 kg dry
Acrylic	US Aristech Acrylic
Control System	Balbao Control System
Jets - 72pcs (Stainless steel jets)	9 * 3.0" in directional hydromassage jets 53 * 1.0" in directional hydromassage jets 10 * air bubble jets
Massage Pumps	2 * 2 HP
Air Blower	400W
Filtration Pump	0.35HP
Heater	3KW
Max Power Draw Amps	15 amps
LED Level Light	16
Insulation Thickness	Hot tub insulation 18-20mm Skirting insulation 25mm
Ozone	Yes
UV Filter	No
ABS Base	Yes
Support Frame	Stainless Steel

Pillows	3
LED Waterfall	Yes
LED Fountain	Yes
LED Drink Holder	Yes
Bluetooth Music	Yes
Additional Features	Steps and Cover included




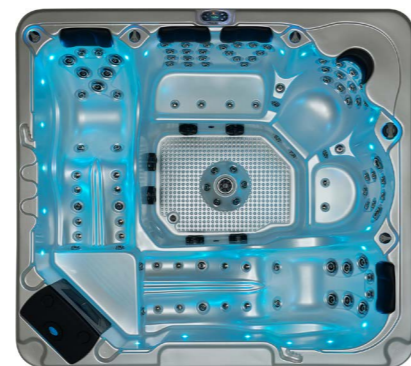


+ WINDSOR

Seating Capacity	6 persons (4 seaters + 2 loungers)
Dimensions	2500 * 2300 * 950mm
Water Capacity	1200 liters
Weight	450 kg dry
Acrylic	US Aristech Acrylic
Control System	Balbao Control System (with wifi capability)
Jets - 116pcs (Stainless steel)	1 * 5.0" in volcano jets 13 * 3.5" in directional hydromassage jet 2 * 2.5" in double rotating jets 78 * 2.0" in directional hydromassage jets 22 * air bubble jets
Massage Pumps	2 * 3HP 1 * 2.5HP
Air Blower	900W
Filtration Pump	0.35HP
Heater	3KW
Max Power Consumption	10150W
LED Level Light	23
Insulation Thickness	Hot tub insulation 18mm Skirting insulation 25mm
Ozone	Yes
UV Filter	Yes
ABS Base	Yes
Support Frame	Stainless Steel




Pillows	5
Waterfall	Yes
Bluetooth Music	Yes
Arctic Insulation Upgrade	Yes 
Additional Features	Steps and Cover included



+ BOND

Seating Capacity	6 persons (5 seaters + 1 loungers)
Dimensions	2200 * 2200 * 900mm
Water Capacity	1200 liters
Weight	350 kg dry
Acrylic	US Aristech Acrylic
Control System	Balbao Control System (with wifi capability)
Jets - 105pcs (Stainless steel)	1 * 5.0" in directional hydromassage jets 16 * 3.5" in directional hydromassage jets 41 * 2.5" in directional hydromassage jets 29 * 2.0" in directional hydromassage jets 18 * air bubble jets
Massage Pumps	3 * 2HP
Air Blower	700W
Filtration Pump	0.35HP
Heater	3KW
Max Power Draw Amps	23 amps
LED Level Light	18
Insulation Thickness	Hot tub insulation 18mm Skirting insulation 25mm
Ozone	Yes
UV Filter	Yes
ABS Base	Yes
Support Frame	Stainless Steel



Pillows	3
Waterfall	Yes
Bluetooth Music	Yes
Arctic Insulation Upgrade	Yes 
Additional Features	Steps and Cover included




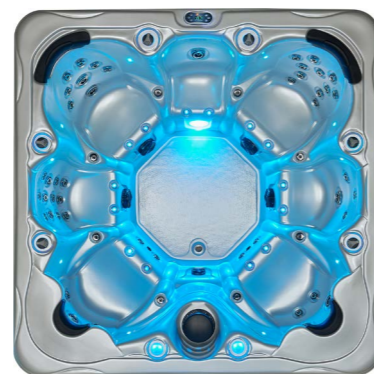


+ SOHO

Seating Capacity	7 persons (7 seaters)
Dimensions	2240 * 2240 * 900mm
Water Capacity	1200 liters
Weight	350 kg dry
Acrylic	US Aristech Acrylic
Control System	Balbao Control System (with wifi capability)
Jets - 79 pcs (Stainless steel jets)	1 * 5.0" in directional hydromassage jets 6 * 3.5" in directional hydromassage jets 60 * 2" in directional hydromassage jets 12 * air bubble jets
Massage Pumps	2 * 3HP
Air Blower	400W
Filtration Pump	0.35HP
Heater	3KW
Max Power Draw Amps	20 amps
LED Level Light	12
Insulation Thickness	Hot tub insulation 18-20mm Skirting insulation 25mm
Ozone	Yes
UV Filter	Yes
ABS Base	Yes
Support Frame	Stainless Steel



Pillows	4
Waterfall	Yes
LED Fountain	Yes
Bluetooth Music	Yes
Arctic Insulation Upgrade	Yes 
Additional Features	Steps and Cover included



Shown with optional LED strip in skirting.





Customisable Options

UPGRADES

Customise your spa to best fit your needs with the optional upgrade features below.



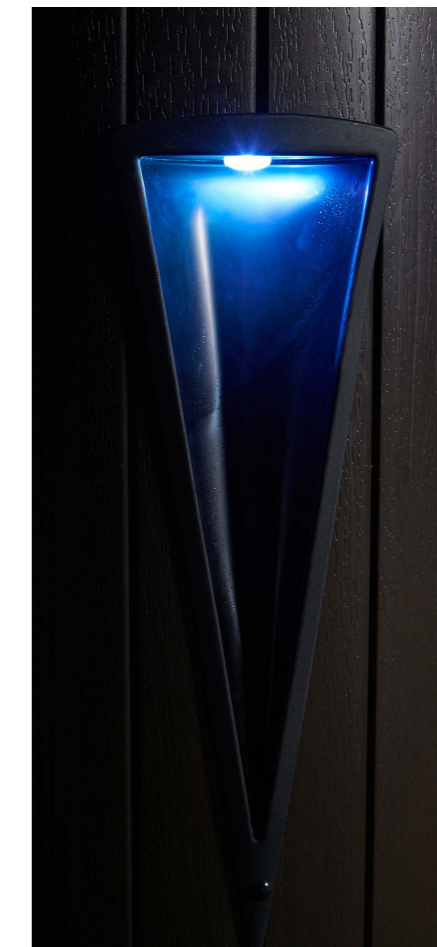
Insulation Cover



Step



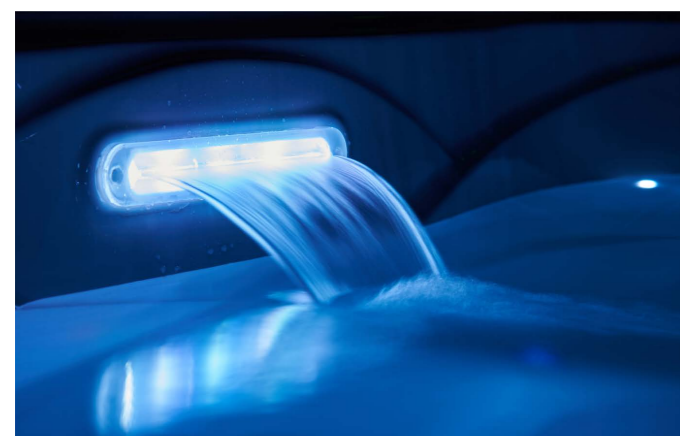
Skirting Strip Light



Corner Light



Pillow Waterfall



LED Waterfall



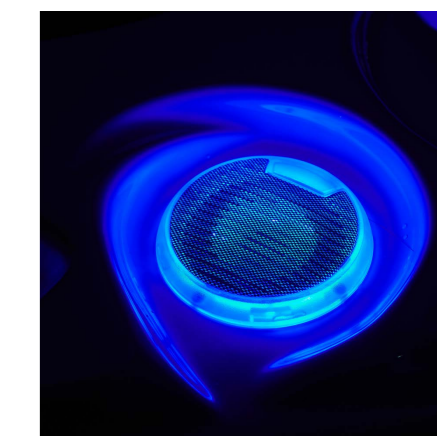
LED Jets



LED Valve



LED Fountain



LED Speaker



UPGRADES



0800 629 324 mayfairpools.co.nz

Mayfair
SPAS